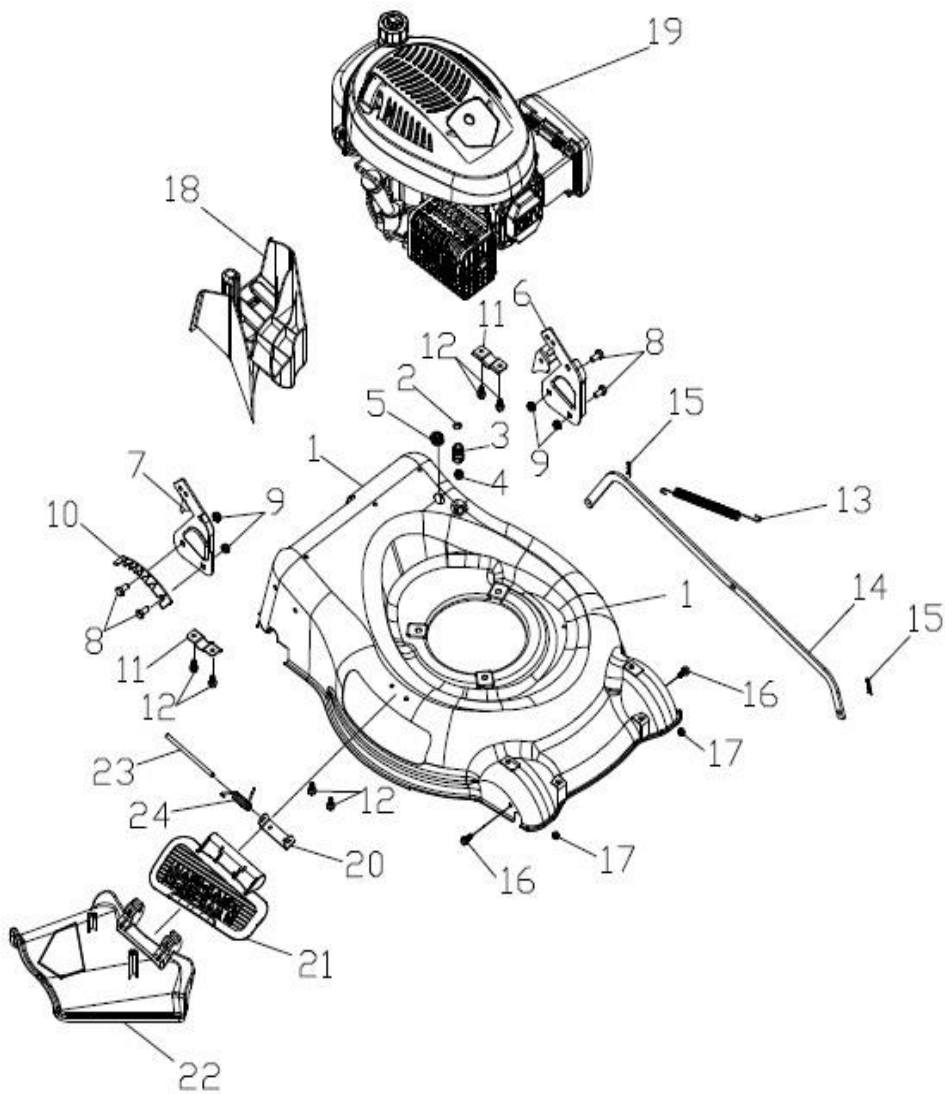


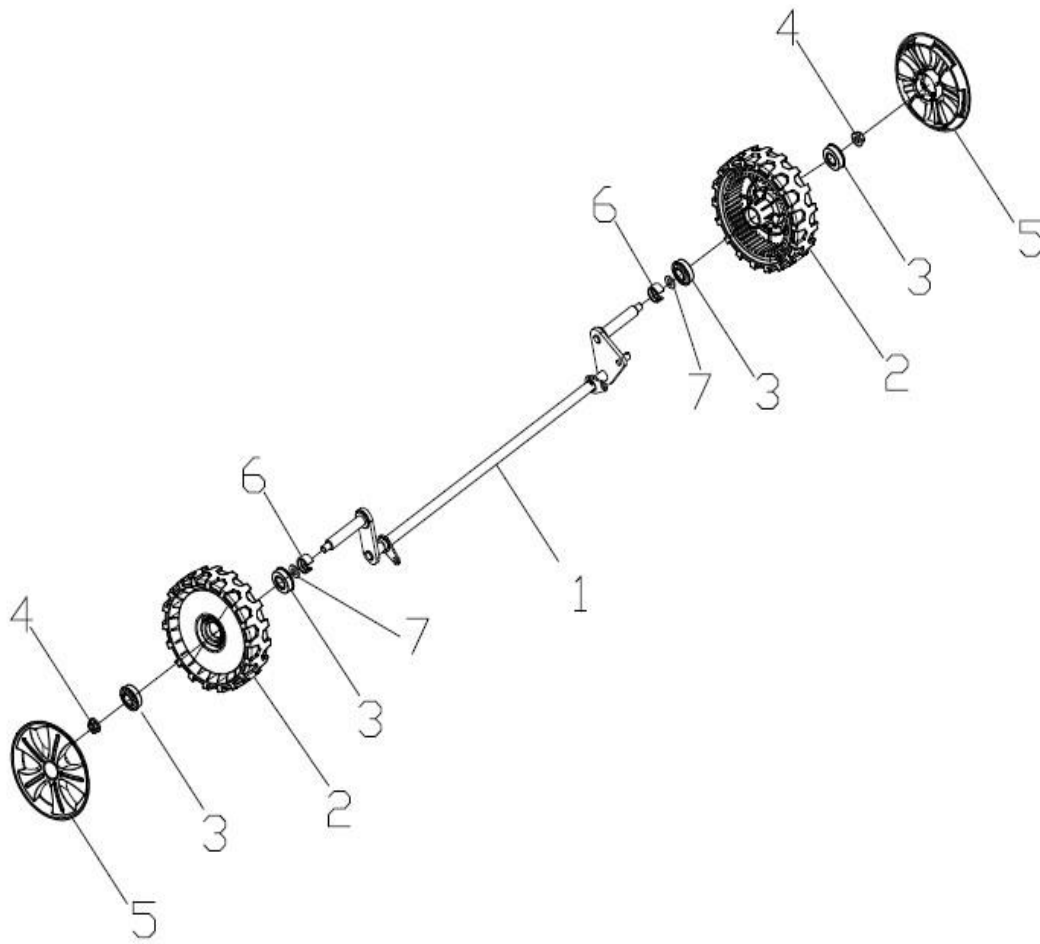
1	foam pipe	1
2	stop lever	1
3	Self-propelled Lever	1
4	upper handrail	1
5	Rope Guide	1
6	Cap nut	1
7	Brake Cable Assy plate	1
8	Bolt	2
9	Self-locking nut	2
10	Plastic stopper	1
11	brake cable	1
12	selfpropelled cable	1
13	quick fix knob	2

14	Pin	2
15	Quick Fix Handle	2
16	lock for fast fix handle	2
17	flat washer	4
18	lock nut	2
19	Hexagon nut	4
20	lower handrail	1
21	fastener	1
22	Hexagon head bolts	2
23	Half round head square neck boltsbolts	2
24	Hex lock nut	2
25	triangle knob	2

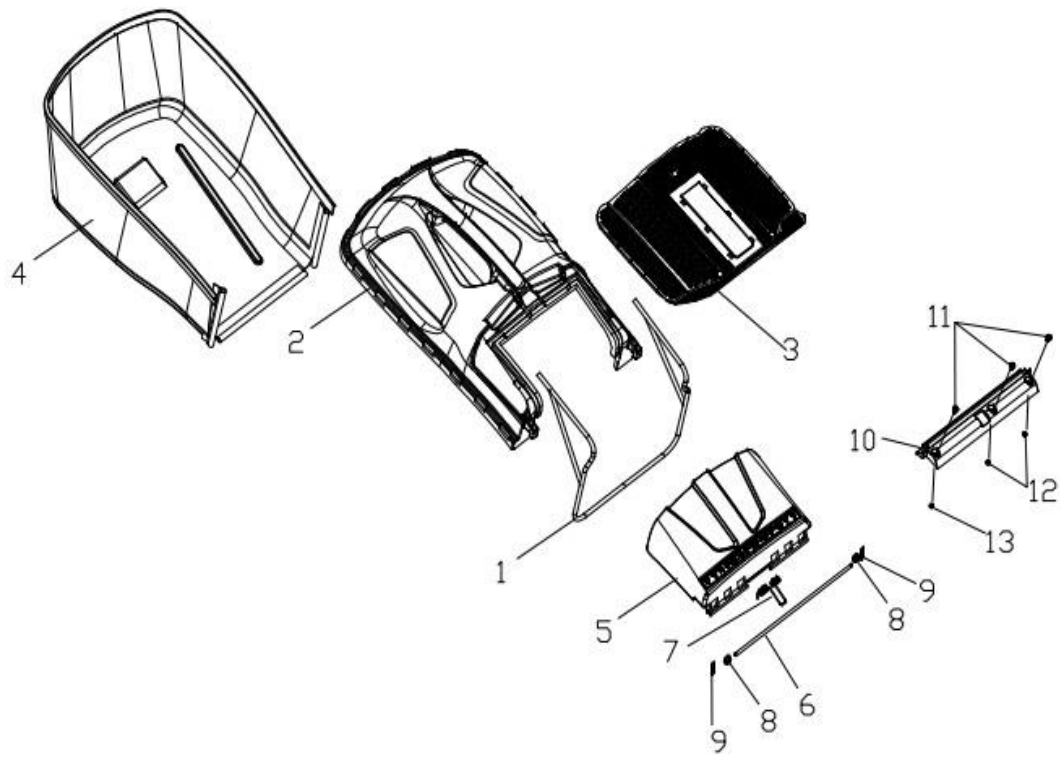


1	deck welding assy.	1
2	"O" ring	1
3	inlet	1
4	Pipe connector nut	1
5	cable stopper	1
6	left handle bracket	1
7	left handle bracket	1
8	Hexagon head bolts	4
9	Hex lock nut	4
10	height adjustment board	1
11	rear drive bracket	2
12	Hex tapping screws	6
13	Pull Spring for Pull Rod	1

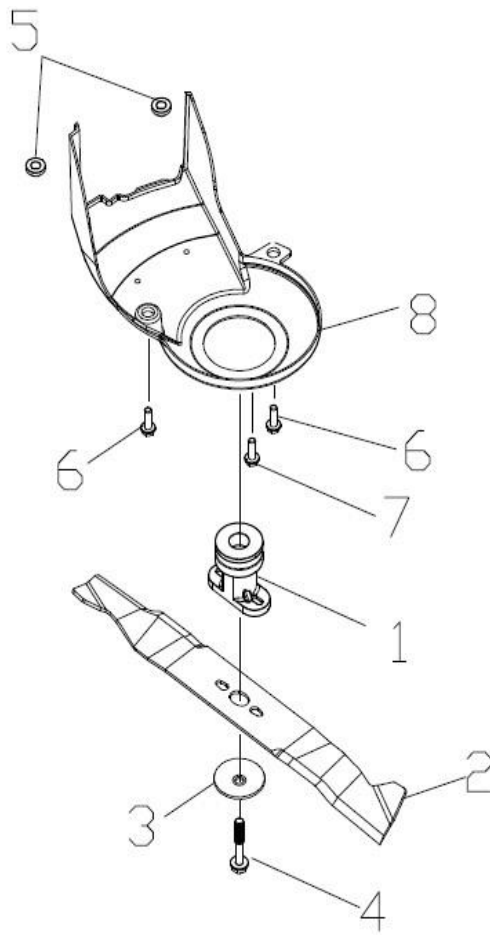
14	Height Adjustment Pull Rod	1
15	R type pin	2
16	Bolt	2
17	Self-locking nut	2
18	mulching plug	1
19	petrol engine	1
20	Bracket plate for defelctor	1
21	mulching board	1
22	side discharge cover	1
23	Mulch Shaft	1
24	mulch board spring	1



1	front drive assy.	1	
2	wheel assy.	2	
3	wheel punch bearing	4	
4	Self-locking nut	2	
5	outer cover of hub	2	
6	front bracket fastener	2	
7	flat washer	2	

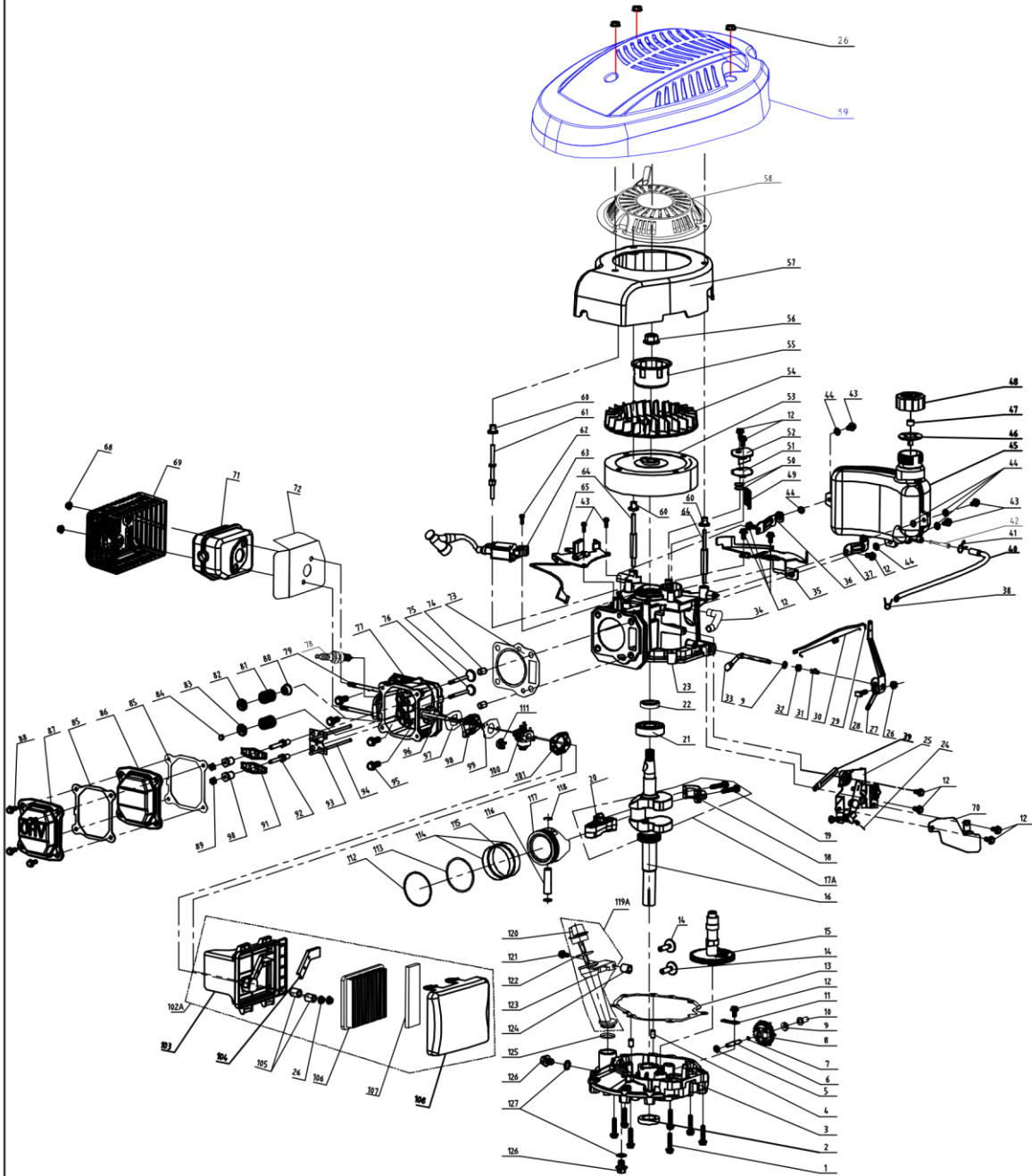


1	fabric metal frame	1
2	top of grass box	1
3	filter net of grass bag	1
4	fabric grass bag	1
5	rear discharge cover	1
6	Shaft for rear discharge cover	1
7	cover spring	1
8	lock washer	2
9	R type pin	2
10	rear discharge cover dust proof board	1
11	Bolt	3
12	Self-locking nut	2
13	Cap nut	1









1	Blade Adapter Assy	1	
2	blade	1	
3	blade washer	1	
4	Inch hex flange bolts	1	
5	Chassis bushing	2	
6	Hex flange bolts	2	
7	Hexagon head bolts	1	
8	belt cover	1	







T475- 2013 - 2015







Pol.č	English Description	množstvo
1	Bolt	7
2	oil seal	1
3	Crank box cover	1
4	spacing pin	2
5	Gasket	1
6	rate-limiting gear shaft	1
7	Gear Shaft circlip	1
8	rete-limiting gear assy	1
9	Gasket	2
10	Sliding Sleeve	1
11	rate-limiting gear shaft	1
12	Bolt	11
13	Seal Gasket of Crankc	1
14	pin	2
15	camshaft assy.	1
16	crankshaft assy.	1
17	connecting rod assy.	1
18	connecting rod cap	1
19	connecting rod bolt	2
20	connecting rod body	1
21	rolling bearing	1
22	oil seal	1
23	crankshaft box	1
24	throttle control spring	1
25	throttle assy.	1
26	Hex flange nuts	6
27	throttle rocker arm	1
28	Bolt	1
29	Handspike of Valve	1
30	valve spring	1
31	R type pin	1
32	oil seal	1
33	rate-limiting rocker arm	1
34	waste pipe	1
35	main bracket of fuel tank	1
36	right bracket of fuel tank	1
37	left bracket of fuel tank	1

38	fuel pipe lock clamp	1
39	Clip	1
40	fuel pipe	1
41	fuel pipe lock clamp	1
42	Filtering Net Duct of Fuel	1
43	Bolt	5
44	Cushion Blocking gasket	6
45	fuel tank body	1
46	Fuel Tank Cap seal gasket	1
47	fuel tank cap sponge	1
48	fuel tank cap	1
49	oil filter net	1
50	Valve Element of Respirator Cover	2
51	Gasket of Respirator Cover	1
52	Respirator Cover Plate Assy	1
53	flywheel assy	1
54	fan	1
55	starter hub	1
56	Hex flange nuts	1
57	Blower Housing	1
58	pull starter assy.	1
59	Engine Cover	1
60	Blower Housing Bush	1
61	Different-shaped double-head bolts I	1
62	Bolt	1
63	ignition assy.	1
64	Different-shaped double-head bolts II	2
65	Detent Assy	1
66	left decorative dilms	1
67	right decorative dilms	1
68	Self-locking nut	2
69	muffler cover assy.	1
70	throttle protector board	1
71	muffler assy.	1
72		1
73		1
74	spacing pin	2
75	IntakeValve	1

1	Blade Adapter Assy	
2	blade	
3	wheel assy.	
4	outer cover of hub	
5	wheel assy.	
6	outer cover of hub	

7	wheel punch bearing	
8	belt cover	
9	v belt	
10	quick fix knob	
11	Pin	
12	Quick Fix Handle	

13	flat washer	
14	lock nut	
15	Hexagon nut	
16	mulching board	
17	side discharge cover	